

DATA SHEET

Air Knives by JETAIR™

High-Efficiency JetX™, LXC™, MA™ and JetBlast™ Air Knives generate moderate pressure and high flow ideal for conveyor line drying, wire drying, blow-off, coating, plating and anti-static applications.

JetAir Technologies' Air Knives are precision engineered and completely adjustable to produce a clean, high velocity, high impact stream of air to remove industrial debris, dust, and liquids typically found following a wash, filling, or coating operation. All JetAir Air Knives are engineered, manufactured, and tested to provide a 100% dry part prior to other industrial operations.

JetX™

Air Knives

Highly efficient faceted profiles with force vectored outlets straighten flow and eliminate swirl at gap.

Stainless Steel; 100% Adjustable.

**SX™ MicroBody
MX™ Mid-Size
LX™ Large Body**

High-Speed Applications.

Compressed Air Replacement.

Static Control.

LXC™

Air Knife

Highly efficient faceted profile with extended force vectored outlet balances and straightens air flow over entire length of air knife eliminating swirls and pressure differences.

Stainless Steel; 100% Adjustable.

Coating & Sheet Applications.

Heavy-Duty 10G Construction.

MA™

Air Knife

Efficient Tear-Drop profile with Gap Adjustment.

Aluminum; 100% Adjustable.

High-Speed Blow-Off Applications.

Non-Washdown.

Compressed Air Replacement.

Static Control.

JetBlast™

Air Knife

Efficient nozzle device projects air velocity up to 8" [200mm] from outlet. Aerodynamic design balances pressure across all nozzles.

Stainless Steel; 100% Adjustable.

Extended Air Reach ideal for case and deep cavity blow-off.

**JETAIR™
TECHNOLOGIES, LLC**



JetAir Technologies' technical staff designs optimized application specific systems. System layouts specify complete and guaranteed solutions! Our Application Engineers are adept designing systems to operate under unusual conditions and/or with special requirements. Air Knives are available in many configurations and with multiple options.

**Contact a
JetAir
Applications
Engineer.**



Air Knife Features Chart

	LX	MX	SX	LXC	MA	JS
Stainless Steel SS 304	●	●	●	●	●	●
Aluminum Anodized 6061					●	
Compact 2" (50mm) width			●			
Non-Swirling Outlet Coating Applications				●		
High-Speed Conveyor Food & Beverage, Washdown	●	●		●	●	●
Extended Air Velocity Reach Case & Deep Cavity Blow-Off						●
< 60" (1,5M)		●	●		●	●
> 60" (1,5M)	●			●		●
Ø4" (100mm) Inlet End, Side or Top Position	●			●		●
Ø3" (76mm) Inlet End, Side or Top Position		●			●	●
Ø2" (51mm) Inlet End, Side or Top Position		●			●	
Ø1" (25mm) Inlet End, Side or Top Position			●			

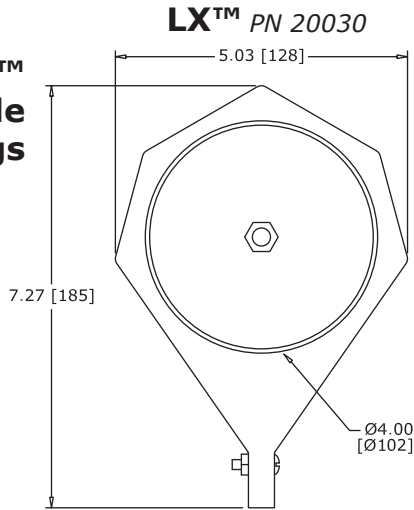
JETAIR™
TECHNOLOGIES, LLC

1884 Eastman Ave., #112, Ventura CA 93003
805-654-7000 main, 805-654-7064 facsimile
www.jetairtech.com or sales@jetairtech.com

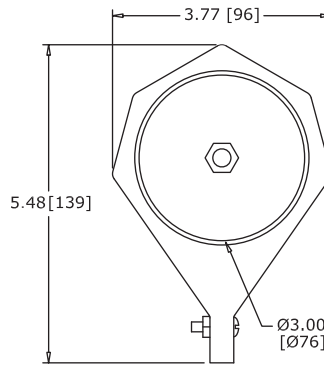
Technical Specifications: Air Knives

JetAir Technologies' Air Knives are precision engineered and completely adjustable to produce a clean, high velocity and high impact stream of air.

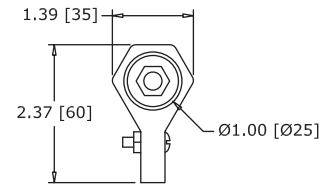
JetX™ Profile Drawings



MX™ Air Knife PN 20020

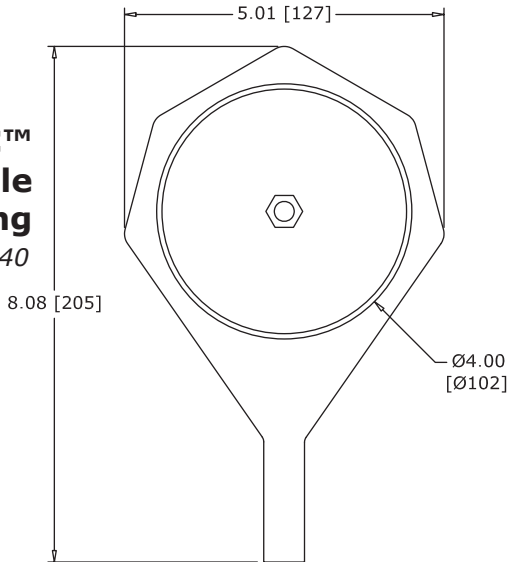


SX™ PN 20010



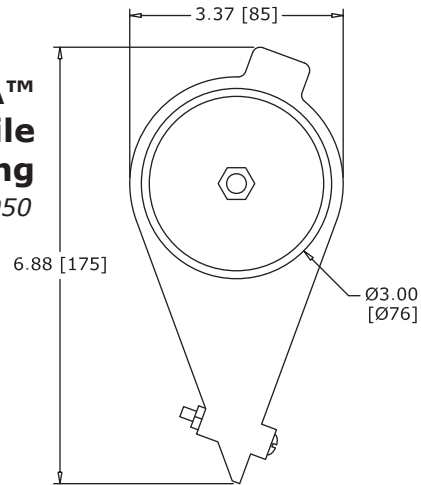
LXC™ Profile Drawing

PN 20040



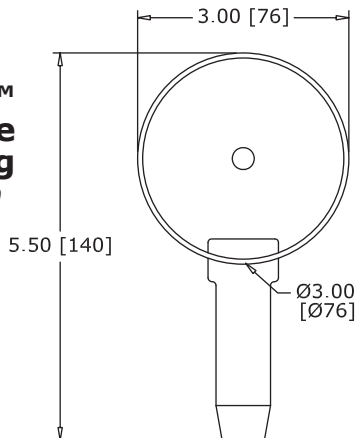
MA™ Profile Drawing

PN 20050



JetBlast™ Profile Drawing

PN 20060



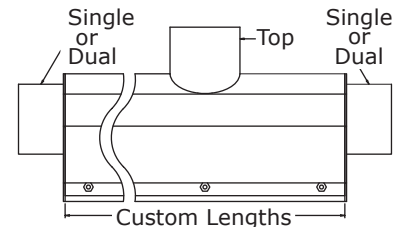
Air Components Available:

- **Tubing & Flexible Hose**
Ambient and High-Heat
- **Reducers, Elbows**
- **Dividers**
Wyes & Manifolds
- **Enclosures**
- **Silencers**
- **Air Flow Valves**
Automatic, Manual
- **Filters**
- **Custom Fittings**
- **Blower Systems**
- **Automation Solutions**



Air Knife Options:

- **AirKnife Stands:**
Mount to Conveyor or Self-Supporting, SS, 100% adjustable.
- **Static Control:**
Add-On Bars
- **Shielding:**
Spray Guards, Drain Options and Noise Control
- **Air Gap Control:**
100% Adjustable 0.035-0.25" or [0,9-22mm].
- **Inlet Sizes & Positions:**
Ø1", Ø2", Ø3", & Ø4" inlet sizes are available.



JETAIR™

TECHNOLOGIES, LLC

1884 Eastman Ave., #112, Ventura CA 93003
805-654-7000 main, 805-654-7064 facsimile
www.jetairtech.com or sales@jetairtech.com